

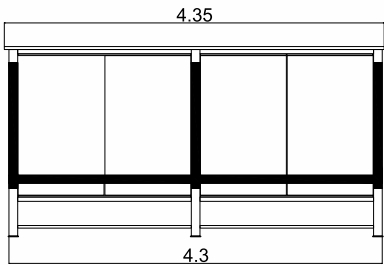
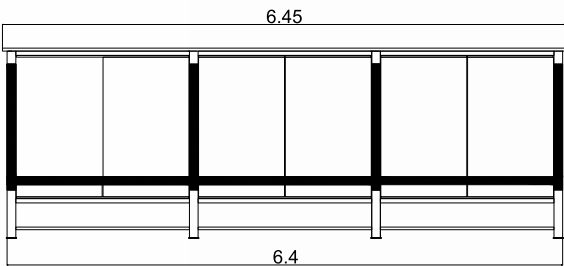
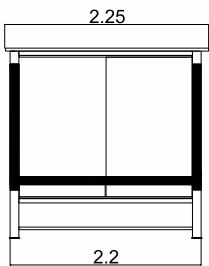
H type

MODERN | STYLISH | RELIABLE

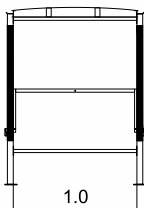
Original steel-wooden structure (full RAL colours) with flat roof and glass walls.
Double anti-corrosive protection ensures trouble-free operation for a long time.



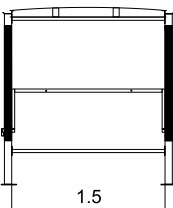
Available lengths and widths:



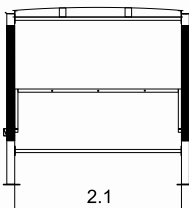
internal width [m]	1.0	1.5	2.1	2.3	2.7
number of shopping trolley rows	1	2	3	3	4
shelter index	HW1	HW2	HW3	HW3+	HW4
roof lenght [m]					
2.25	•	•	•	•	•
4.35	•	•	•	•	•
6.45	•	•	•	•	•



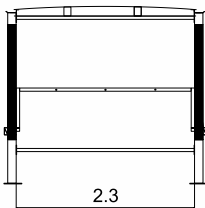
H1: 1 x



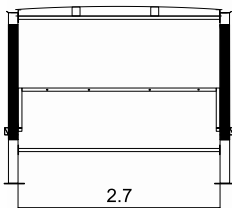
H2: 2 x



H3: 3 x



H3+: 3 x



H4: 4 x

Possible structure modifications:



long
roof



short
roof



extra
(hidden
connections)

Possible accessories:



advertising
frame



back
wall



shields



rolling
doors



transparent
doors



logo



closing
crossbeam

Wall filling options:



glass



display

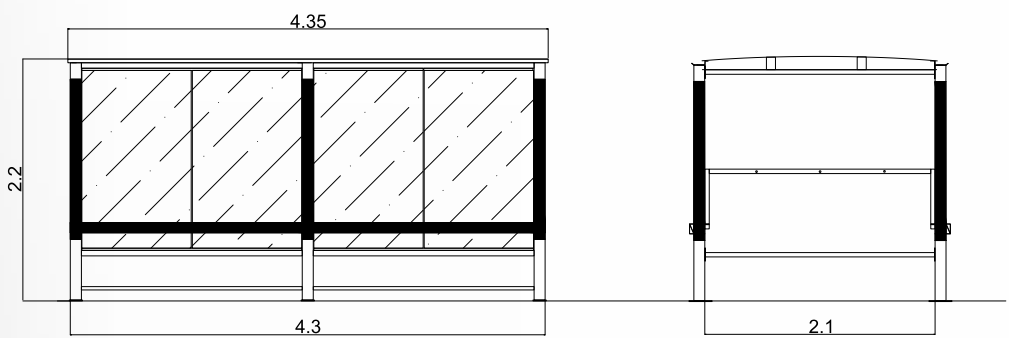


economic



cellular
polycarbonate
8mm

Specification (H3 W):



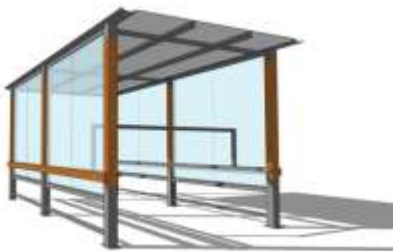
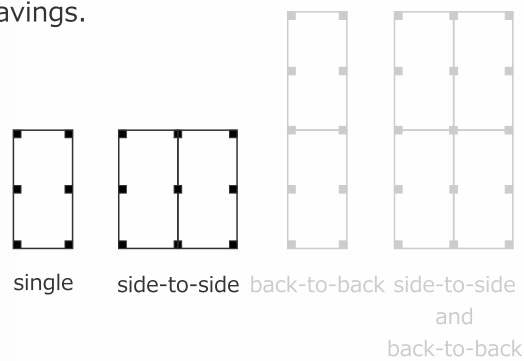
Parameters:

- 100% galvanised and powder-coated steel
- constructional laminated timber
- panes: 6 mm toughened glass
- roof: 8 mm cellular polycarbonate with UV filter
- 6 foundation points
- multiplication possibility
- full statics for all locations

Multiplications:

The structure allows creating combined systems:

This ensures not only greater opportunities for equipment arrangements in the commercial establishments but also financial savings.



Each our structure is adapted to the weather conditions prevailing in the specific area basing on wind and snow maps.

The production process is carried out on the basis of the standards:

PN EN 1090 -1-2
ISO 3834

Every product has a certification mark:

